

**matt**  
SERIES \_\_\_\_\_



**B R I N G**  
**L I F E**  
TO YOUR HOME

600x1200mm  
**GVT | PGVT**  
2023 COLLECTION

## Made in India

Each product we manufacture is conceived and produced entirely in India with a refined design and a particular care to make the room area unique and special. Savino is an ever-evolving company with a look at the future and a continuous innovation for increasing improvement through quality and care that characterized our production. The "Made in India" value can easily be seen through the wide range of high quality products which are conceived with a unique design that combines elegance, comfort and functionality.



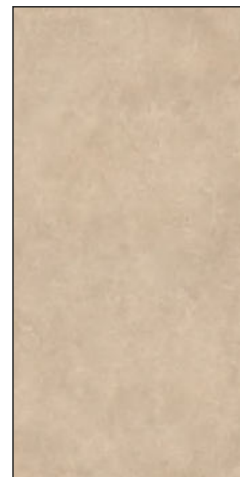
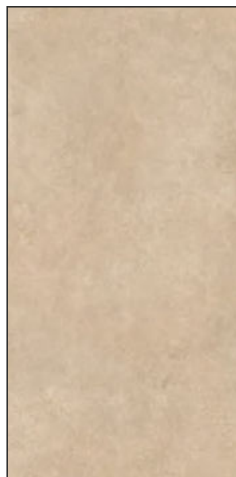
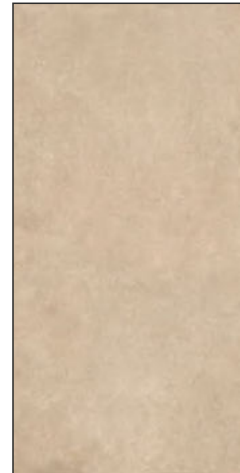
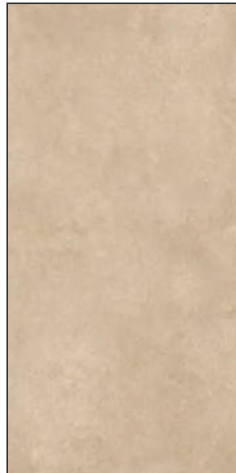




# ALCORA BEIGE

Size :  
**600x1200mm**

Random



Thickness :  
**8.5mm**

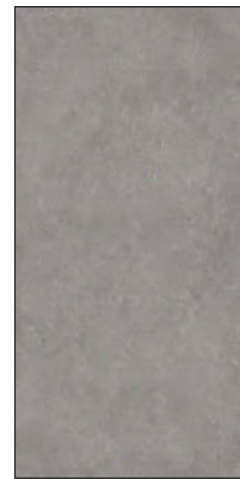
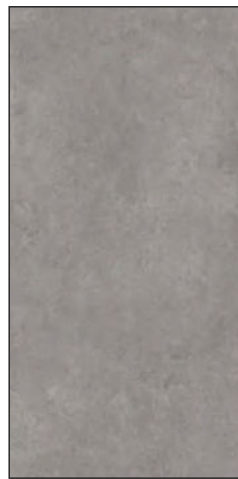
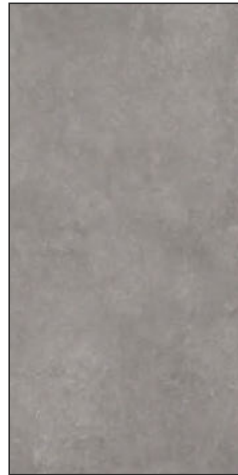
**matt**  
SERIES \_\_\_\_\_



# ALCORA GREY

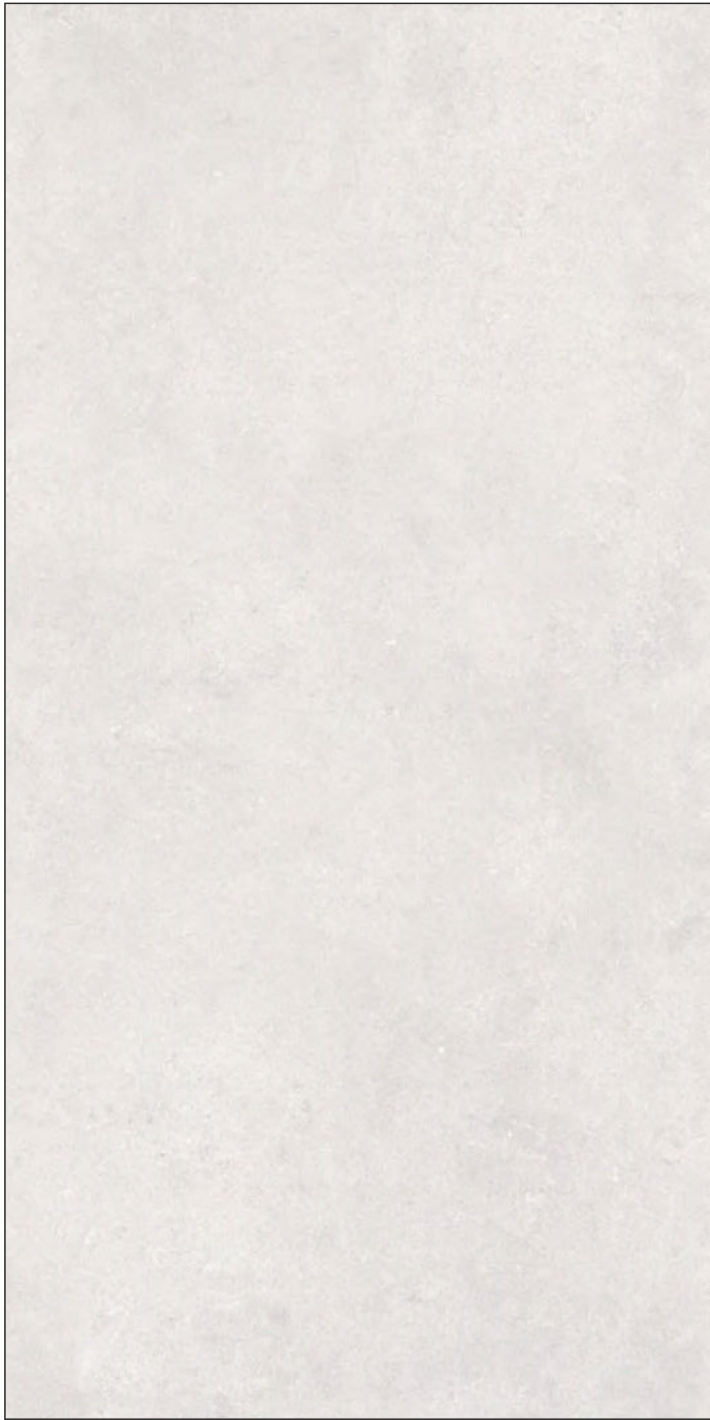
Size :  
**600x1200mm**

Random



Thickness :  
**8.5mm**

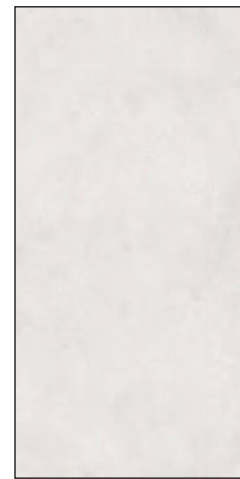
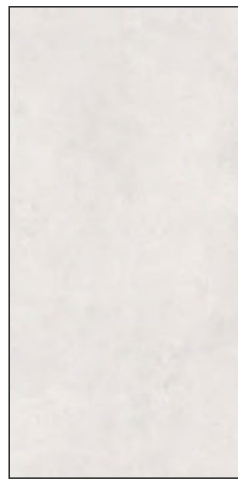
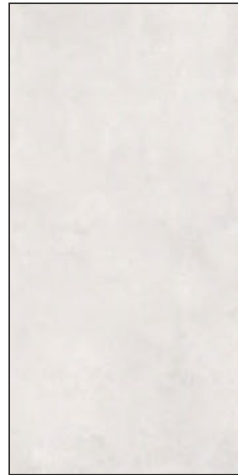
**matt**  
SERIES \_\_\_\_\_



# ALCORA SILVER

Size :  
**600x1200mm**

Random



Thickness :  
**8.5mm**

**matt**  
SERIES \_\_\_\_\_

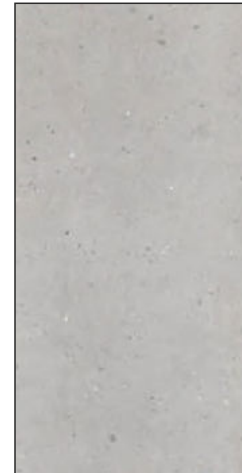




## **BLISTER SILVER**

Size :  
**600x1200mm**

Random



Thickness :  
**8.5mm**

**matt**  
SERIES \_\_\_\_\_





# **BLISTER GREY**

Size :  
**600x1200mm**

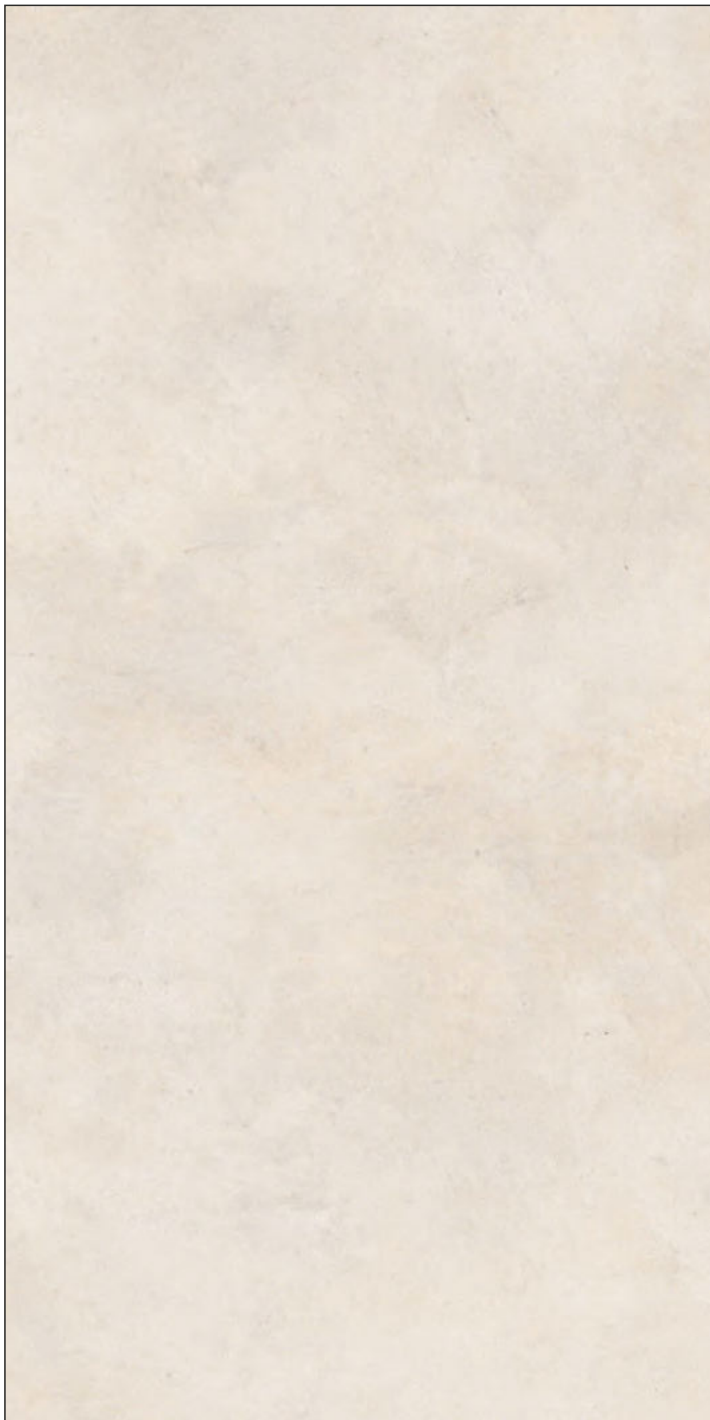
Random



Thickness :  
**8.5mm**

**matt**  
SERIES \_\_\_\_\_

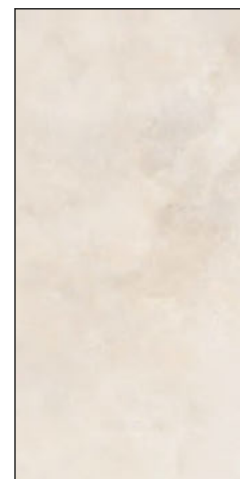
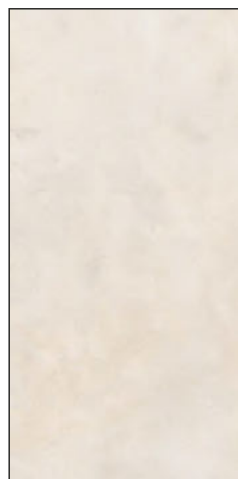
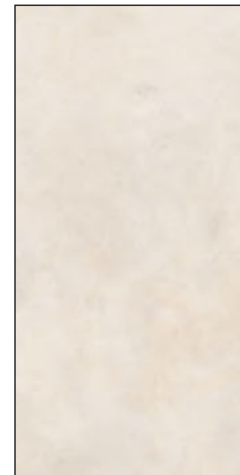
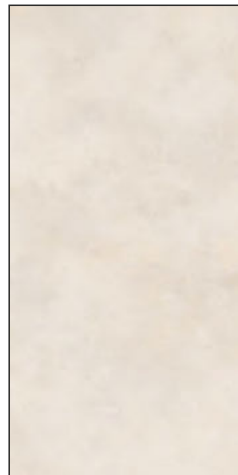




# CARNELIAN CREMA

Size :  
**600x1200mm**

Random



Thickness :  
**8.5mm**

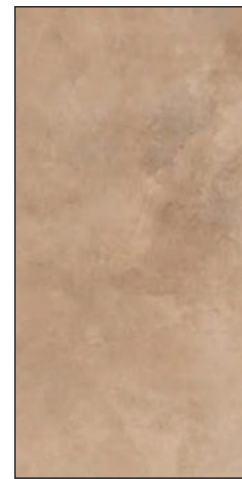
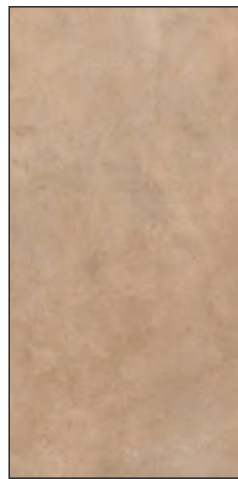
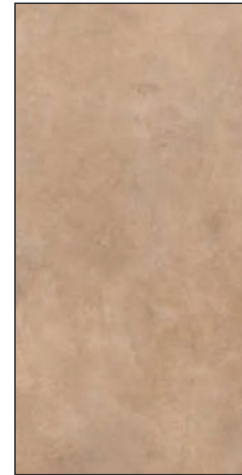
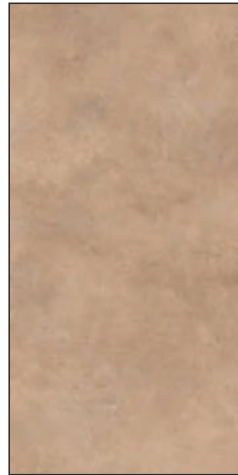
**matt**  
SERIES \_\_\_\_\_



# CARNELIAN BEIGE

Size :  
**600x1200mm**

Random



Thickness :  
**8.5mm**

**matt**  
SERIES \_\_\_\_\_





# CEMENTO BEIGE

Size :  
**600x1200mm**

Random



Thickness :  
**8.5mm**

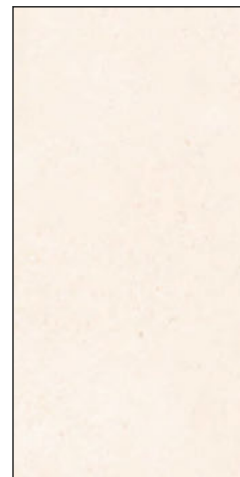
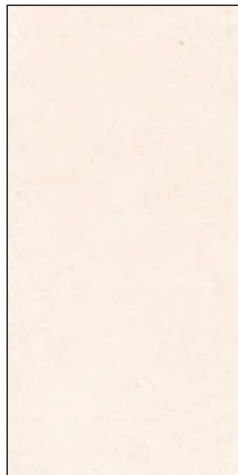
**matt**  
SERIES \_\_\_\_\_



# CEMENTO CREMA

Size :  
**600x1200mm**

Random



Thickness :  
**8.5mm**

**matt**  
SERIES \_\_\_\_\_



# CEMENTO GREY

Size :  
**600x1200mm**

Random



Thickness :  
**8.5mm**

**matt**  
SERIES \_\_\_\_\_



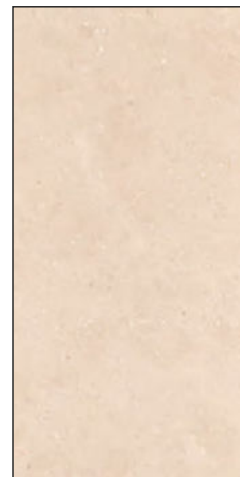
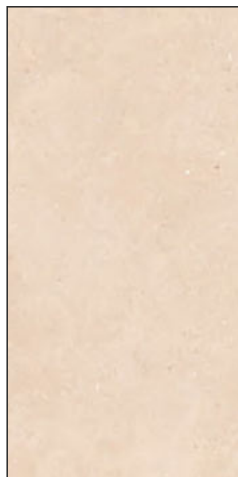
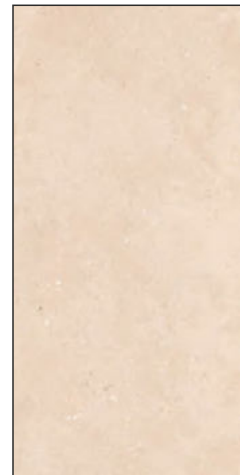
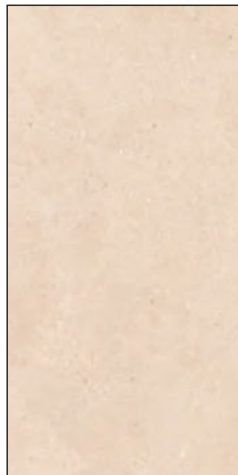




# DANIATO BEIGE

Size :  
**600x1200mm**

Random



Thickness :  
**8.5mm**

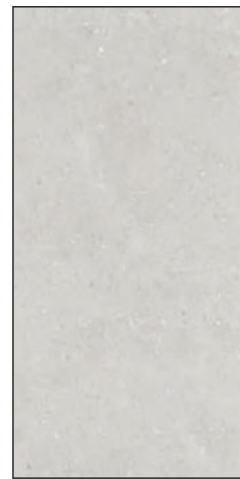
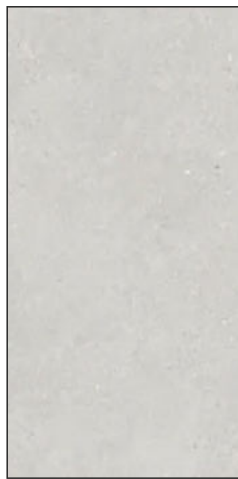
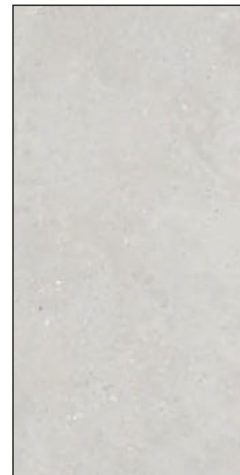
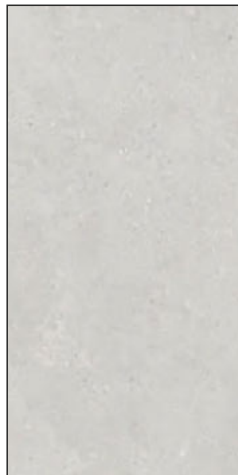
**matt**  
SERIES \_\_\_\_\_



# DANIATO GREY

Size :  
**600x1200mm**

Random



Thickness :  
**8.5mm**

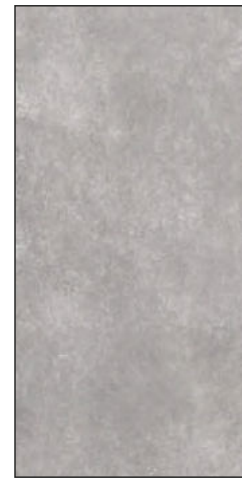
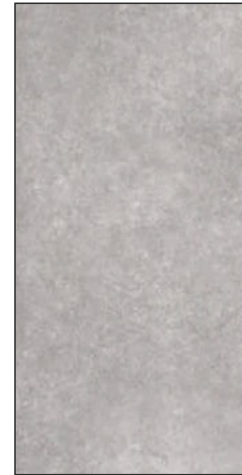
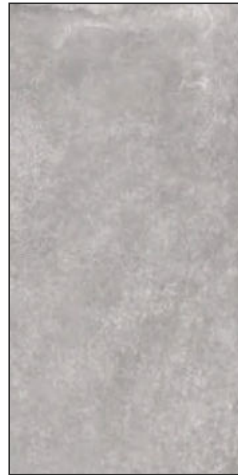
**matt**  
SERIES



# GALLURA GRIS

Size :  
**600x1200mm**

Random



Thickness :  
**8.5mm**

**matt**  
SERIES \_\_\_\_\_



# GALLURA TAN

Size :  
**600x1200mm**

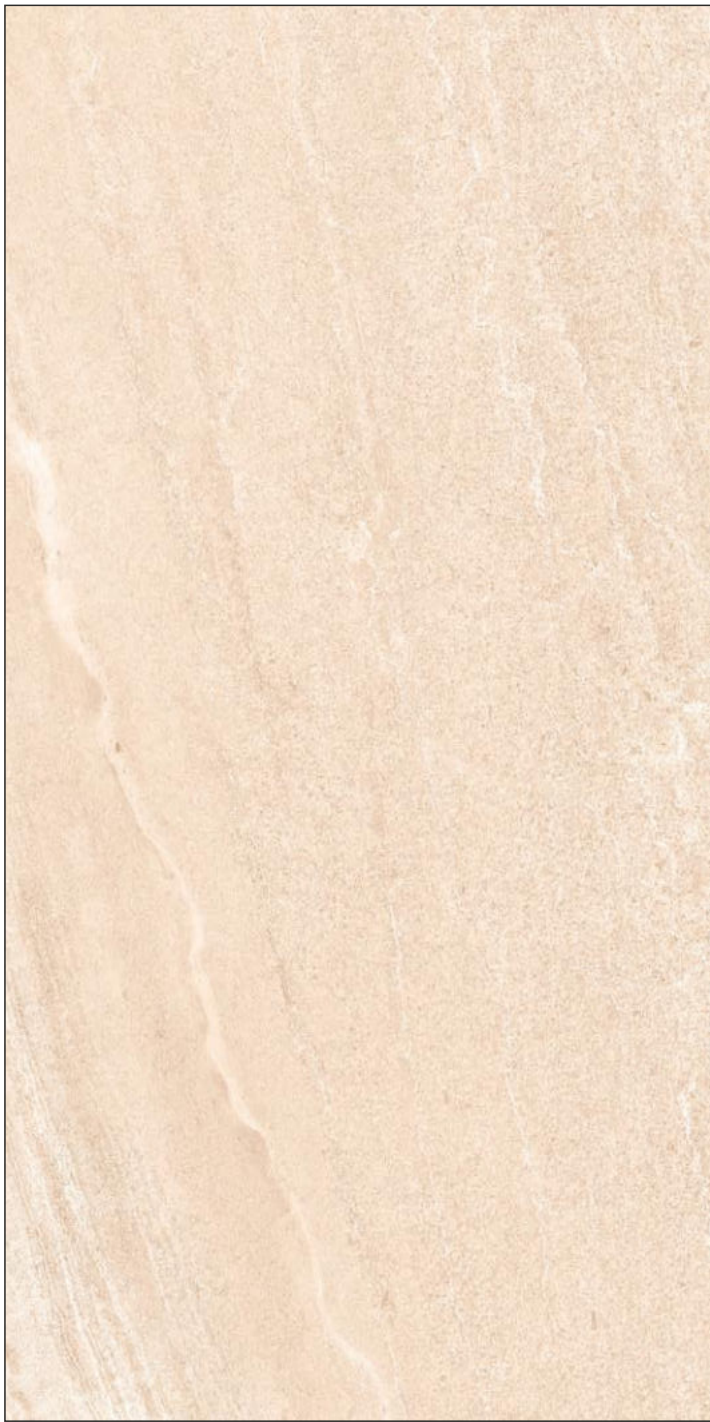
Random



Thickness :  
**8.5mm**

**matt**  
SERIES \_\_\_\_\_

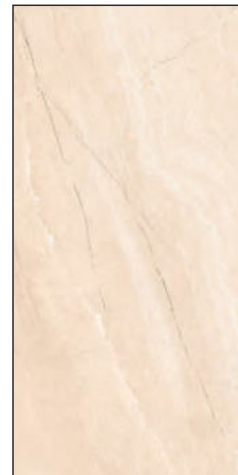




# GLORIA BEIGE

Size :  
**600x1200mm**

Random



Thickness :  
**8.5mm**

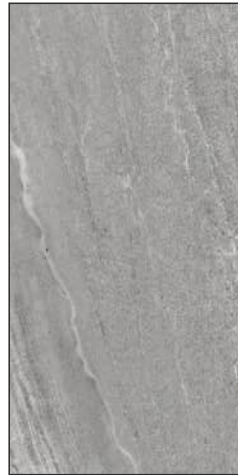
**matt**  
SERIES \_\_\_\_\_



# GLORIA GREY

Size :  
**600x1200mm**

Random



Thickness :  
**8.5mm**

**matt**  
SERIES \_\_\_\_\_

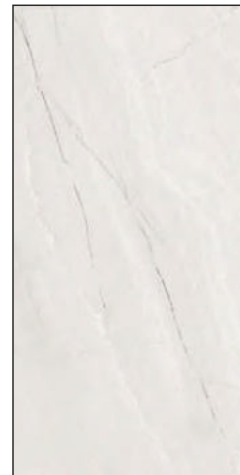




## GLORIA SILVER

Size :  
**600x1200mm**

Random



Thickness :  
**8.5mm**

**matt**  
SERIES





# MADISON GREY

Size :  
**600x1200mm**

Random



Thickness :  
**8.5mm**

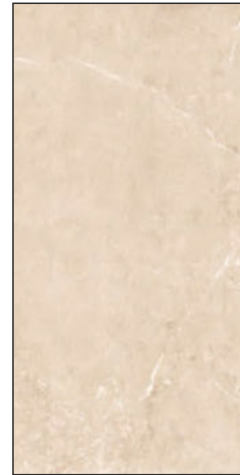
**matt**  
SERIES



## MADISON BROWN

Size :  
**600x1200mm**

Random



Thickness :  
**8.5mm**

**matt**  
SERIES



# MADISON CREMA

Size :  
**600x1200mm**

Random



Thickness :  
**8.5mm**

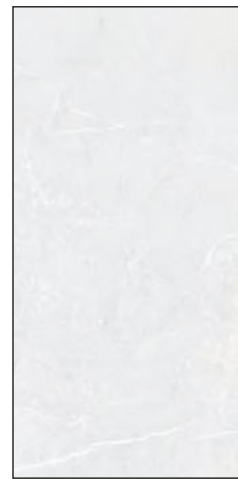
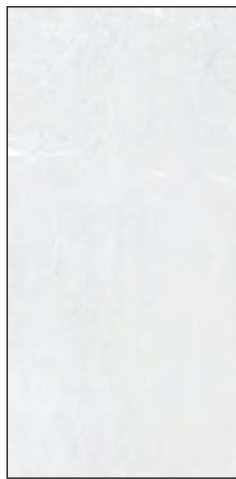
**matt**  
SERIES \_\_\_\_\_



# MADISON SILVER

Size :  
**600x1200mm**

Random



Thickness :  
**8.5mm**

**matt**  
SERIES





# **PARKER CREMA**

Size :  
**600x1200mm**

Random



Thickness :  
**8.5mm**

**matt**  
SERIES \_\_\_\_\_

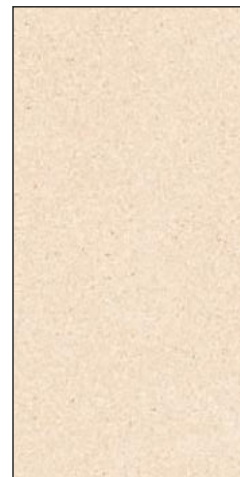




# PARKER BROWN

Size :  
**600x1200mm**

Random



Thickness :  
**8.5mm**

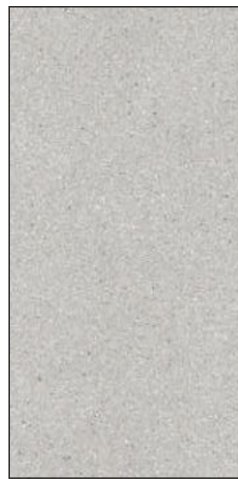
**matt**  
SERIES \_\_\_\_\_



# **PARKER GREY**

Size :  
**600x1200mm**

Random



Thickness :  
**8.5mm**

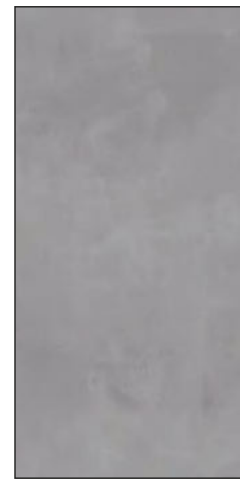
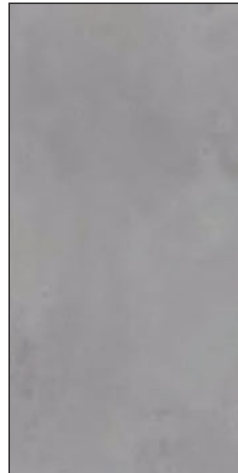
**matt**  
SERIES \_\_\_\_\_



## **RUSTY GREY**

Size :  
**600x1200mm**

Random



Thickness :  
**8.5mm**

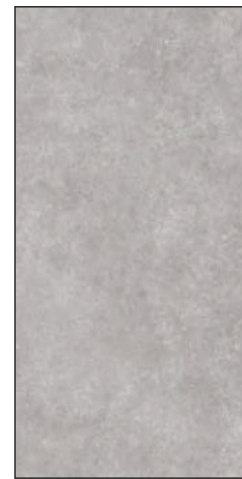
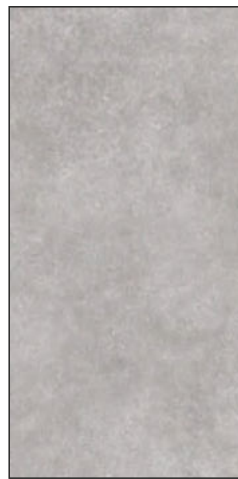
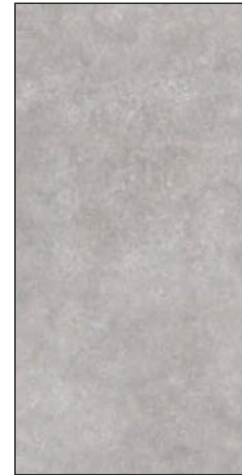
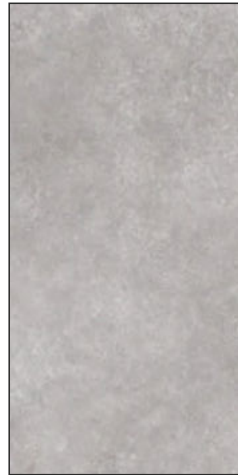
**matt**  
SERIES \_\_\_\_\_



## **SLATY GREY**

Size :  
**600x1200mm**

Random



Thickness :  
**8.5mm**

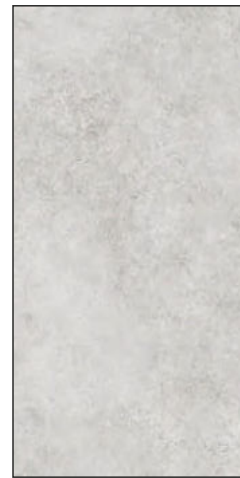
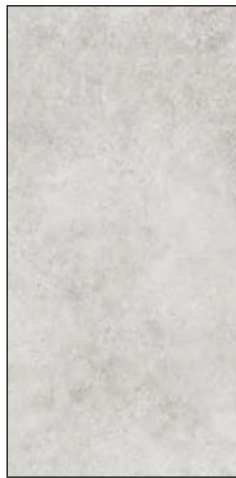
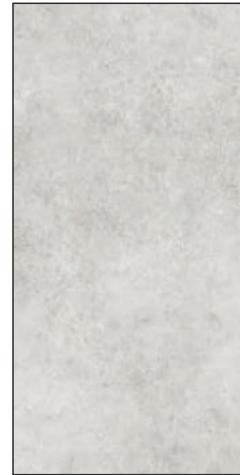
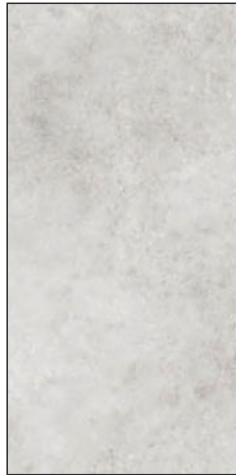
**matt**  
SERIES \_\_\_\_\_



## **SLATY NATURAL**

Size :  
**600x1200mm**

Random



Thickness :  
**8.5mm**

**matt**  
SERIES \_\_\_\_\_

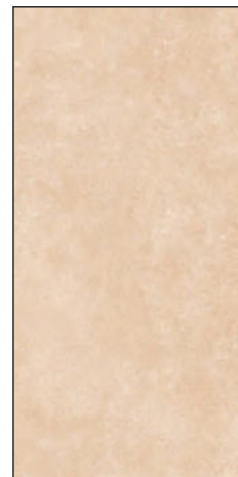
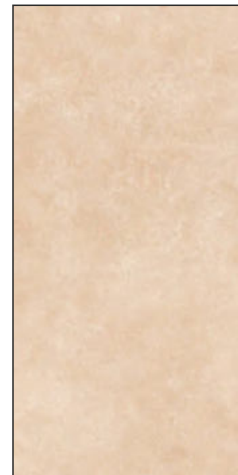




## SLATY SAND

Size :  
**600x1200mm**

Random



Thickness :  
**8.5mm**

**matt**  
SERIES \_\_\_\_\_

# TECHNICAL SPECIFICATION

CHARACTERISTIC	STANDARD AS PER ISO13006:2018/ EN14411 Gr.Bla	MEAN VALUE	TEST METHOD
<b>Regulatory Properties</b>			
Deviation in Length and Width	± 0.30 % (±1.00mm)	± 0.10 %	ISO 10545-2
Deviation in Thickness	± 5.00 % (±0.50mm)	± 4.00 %	ISO 10545-2
Straightness in Side	± 0.30 % (±0.80mm)	± 0.10 %	ISO 10545-2
Rectangularity	± 0.30 % (±1.50mm)	± 0.10%	ISO 10545-2
Surface Flatness Central Curvature	± 0.40 % (±1.80mm)	± 0.20 %	ISO 10545-2
Surface Flatness Edge Curvature	± 0.40 % (±1.80mm)	± 0.20 %	ISO 10545-2
Surface Flatness Warpage	± 0.40 % (±1.80mm)	± 0.10 %	ISO 10545-2
Surface Quality	>95% defects free	>95% defects free	ISO 10545-2
Small Color Difference(for Plain Colour)	ΔE <1.00	ΔE < 0.30	ISO 10545-16
Glossiness ( Polished)	as per mfg.	Gloss Value >90	Gloss Meter 60°
Glossiness (Matt)	as per mfg.	3< Gloss Value <7	Gloss Meter 60°
Glossiness (Satin/Posh)	as per mfg.	7< Gloss Value <18	Gloss Meter 60°
<b>Structural Properties</b>			
Water absorption	≤0.50 %	≤0.060 %	ISO 10545-3
Bulk density	as per mfg.	Min. 2.28 g/cc	ISO 10545-3
<b>Massive Mechanical Properties</b>			
Modulus of rupture	Min. 35.0 N/mm <sup>2</sup>	Min. 42.0 N/mm <sup>2</sup>	ISO 10545-4
Breaking strength thickness <7.5	Min. 700.0 N	Min. 1000.0 N	ISO 10545-4
Breaking strength thickness ≥7.5	Min. 1300.0 N	Min. 1800.0 N	ISO 10545-4
Breaking strength thickness ≥7.5(15mm)	Min. 1300.0 N	Min. 7500.0 N	ISO 10545-4
<b>Surface Mechanical Properties</b>			
MOH'S hardness #	as per mfg.	Polished Min. 4* / Satin, Posh & Matt Min. 6	BS EN 15771
Surface abrasion resistance #	as per mfg.	Polished Min. 2 / Satin & Posh Min. 3 / Matt Min. 4	ISO 10545-7
Deep abrasion resistance #	Max. 175mm <sup>3</sup>	Max. 132mm <sup>3</sup>	ISO 10545-6
<b>Thermal Hydrometric Properties</b>			
Moisture expansion	Max. 0.06%(0.6mm/m)	Max. 0.02mm/m	ISO 10545-10
Thermal expansion(COE) at 100°C	as per mfg.	Max. 6.0 x 10 <sup>-6</sup>	ISO 10545-8
Thermal shock resistance	Min. 10 Cycle	Min. 10 Cycle	ISO 10545-9
Impact resistance(COR) #	Min. 0.55	Min. 0.55	ISO 10545-5
Frost resistance	as per mfg.	Frost Proof	ISO 10545-12
<b>Chemical Properties</b>			
Resistance to staining glazed	Min. Class 3	Min. Class 4	ISO 10545-14
Resistance to household chemicals & swimming pool salts glazed	Min. Class GB	Min. Class GA	ISO 10545-13
Resistance to low concentrate acid and alkalis glazed	as per mfg.	Min. Class GLA**	ISO 10545-13
Resistance to high concentrate acid and alkalis glazed	as per mfg.	Min. Class GHB**	ISO 10545-13
<b>Safety Properties</b>			
Skid resistance(DCOF-DRY) ##	as per mfg.	Glossy P0(<12) / Posh ≥P1 (12-24) / Matt ≥P2(25-34)	BS 7976-2
Slip resistance(DCOF) ( R value) ##	as per mfg.	R9 to R13	DIN 51130
Fire resistance	as per mfg.	Fire Proof	N.A.
Parameters are applicable for 1st Choice/Premium Grade Materials Only.			

## PACKING DETAILS

PRODUCT	SIZE	THICKNESS	TILES / BOX
GLAZED PORCELAIN TILE	600x1200mm / 24"x 48 INCH	8.5mm	2 pcs.



