



# SEZANTO

STEP TILES



**STEP UP**  
YOUR STYLE  
SCALE UP



**STEP &  
RISER TILES**

GLAZED VITRIFIED STEP

200x900mm | 300x900mm

# STEP-UP COLLECTION



1200X300MM



900X300MM

## GRANITE STEP **VS** SEZANTO STEP

BUY THE GRANITE SLAB

GRANITE SHADE, COLOUR, DENSITY ETC...  
MIGHT VARY IN GRANITE

SLAB HAS TO BE CUT INTO THE STEP SIZE

BULL NOSING / HALF MOULDING  
WILL NEED TO BE DONE

CUT GROOVES WILL NEED TO BE DONE

LONGER INSTALLATION TIME

LABOR ORIENTED PROCESS

APPROX COST OF GRANITE:  
70 - 130RS / SQ FT (DEPENDING ON QUALITY)

APPROX COST OF MOULDING:  
20 - 45RS / SQ FT (DEPENDING ON CITY)

APPROX COST OF LEATHER FINISH:  
25 - 50RS / SQ FT (DEPENDING ON CITY)

FINAL APPROX COST OF GRANITE STEP:  
100-220/SQ FT.

BUY THE SEZANTO -  
READY TO INSTALL STEP BOX

UNPACK BOX, LAY THE TILE,  
ALL DONE!

AVAILABLE IN VARIETY OF DESIGN

AVAILABLE FOR INDOOR AND OUTDOOR STEPS.  
CUT GROOVES WILL NEED TO BE DONE

BULL NOSE READY!

SELF EMBOSSED GROOVES READY

EASY TO CLEAN

EASY TO INSTALL

AT LEAST 65-70% FASTER LAYING  
TIME COMPARED TO GRANITE STEPS

AT LEAST 20 - 40% CHEAPER  
COMPARED TO GRANITE STEPS

FINAL APPROX COST OF SEZANTO STEP TILE:  
100-150 / SQ FT



**SEZANTO**  
STEP TILES

READY-TO-INSTALL-STEP-TILES

## SELF EMBOSSED GROOVES

- Provides better grip
- Easy to clean compared to line cut
- Less chance of dirt getting stuck in grooves

## BULL - NOSE FINISH

- Prevents injury from sharp edges

## ANTI SKID PROPERTY

- Coefficient of friction (u)
- U < 0.4 - indoor step tile (smooth finish)
- U > 0.4 - outdoor step tile (anti-skid finish)

## FULL BODY TILE

- Design top-to-bottom
- Sustainability

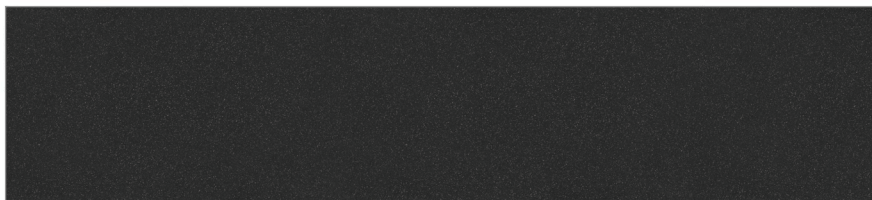


**SEZANTO**

■ **GLAZED**  
VITRIFIED TILES



STEP



RISER

**ROCK BLACK**

Surface  
Matt

Size:  
200x900mm  
300x900mm

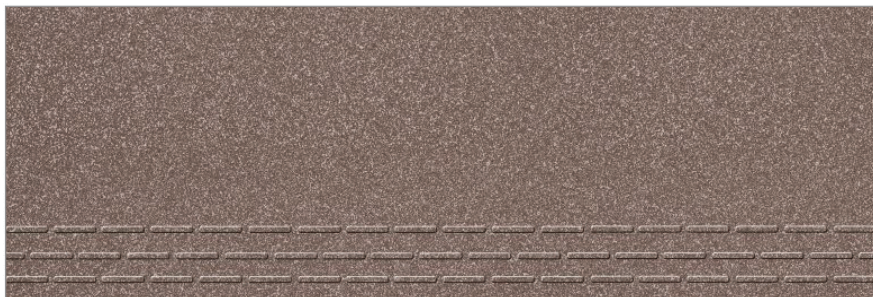


**STEP &  
RISER TILES**  
GLAZED VITRIFIED STEP



**SEZANTO**

■ **GLAZED**  
VITRIFIED TILES



STEP



RISER

**ROCK BROWN**

Surface  
Matt

Size:  
200x900mm  
300x900mm

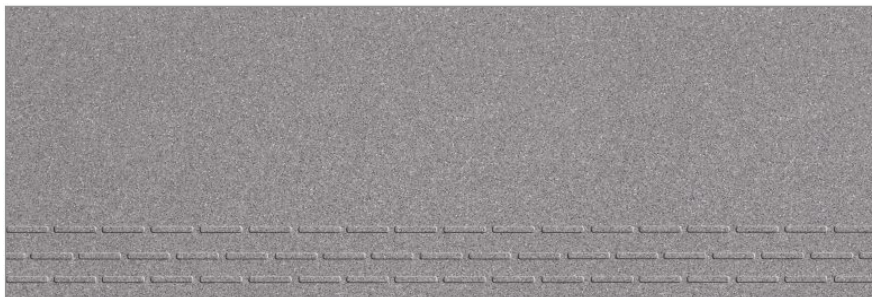


**STEP &  
RISER TILES**  
GLAZED VITRIFIED STEP

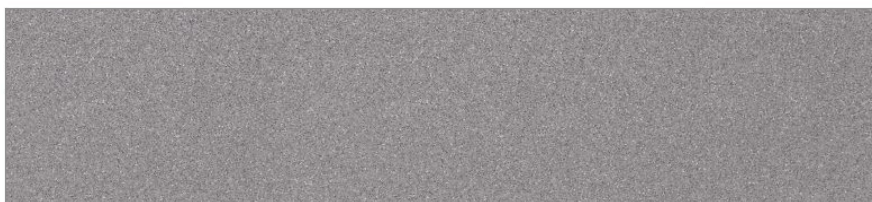


**SEZANTO**

■ **GLAZED**  
VITRIFIED TILES



STEP



RISER

**ROCK GREY**

Surface  
Matt

Size:  
200x900mm  
300x900mm

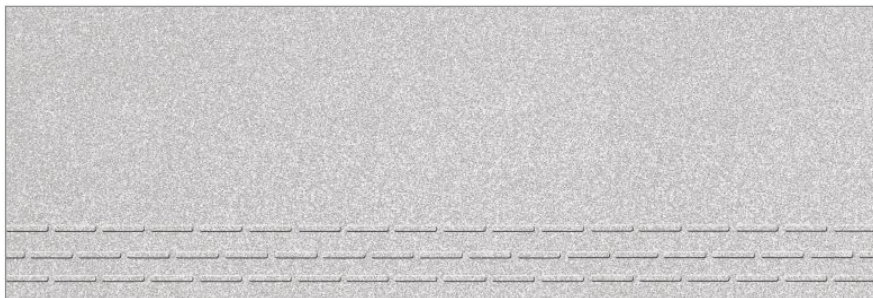


**STEP &  
RISER TILES**  
GLAZED VITRIFIED STEP

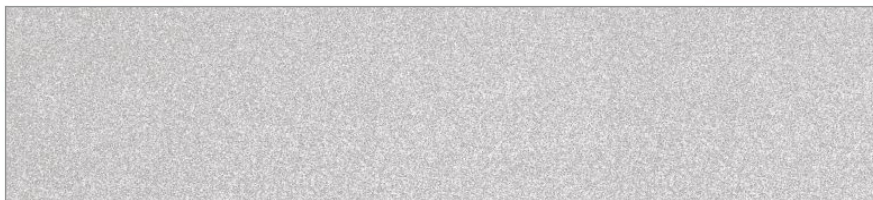


**SEZANTO**

■ **GLAZED**  
VITRIFIED TILES



STEP



RISER

**ROCK SILVER**

Surface  
Matt

Size:  
200x900mm  
300x900mm



**STEP &  
RISER TILES**  
GLAZED VITRIFIED STEP



**SEZANTO**

■ **GLAZED**  
VITRIFIED TILES



**STEP**



**RISER**

**ROCK WHITE**

Surface  
**Matt**

Size:  
200x900mm  
300x900mm



**STEP &  
RISER TILES**  
GLAZED VITRIFIED STEP

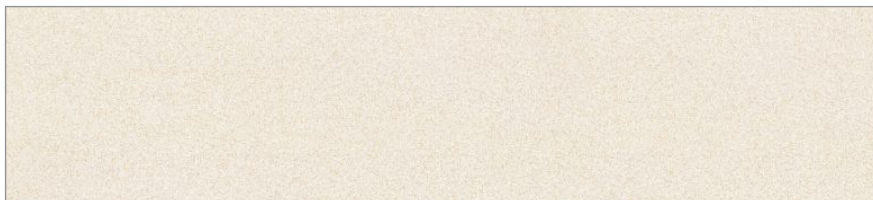


**SEZANTO**

■ **GLAZED**  
VITRIFIED TILES



**STEP**



**RISER**

**ROCK CREMA**

Surface  
**Matt**

Size:  
200x900mm  
300x900mm



**STEP &  
RISER TILES**  
GLAZED VITRIFIED STEP





**SEZANTO**

■ **GLAZED**  
VITRIFIED TILES



STEP



RISER

**ROCK VERDE**

Surface  
Matt

Size:  
200x900mm  
300x900mm



**STEP &  
RISER TILES**  
GLAZED VITRIFIED STEP



**SEZANTO**

■ **GLAZED**  
VITRIFIED TILES

## PACKING DETAILS

Product	Size	Pisces (Per Box)	Thickness (Approx)	Weight (Per Box Approx)
Step	900x300mm (3 Feet)	4 Pic.	11mm	24.0 kg
Riser	900x200mm (3 Feet)	4 Pic.	11mm	16.0 kg

**SEZANTO STEP TILES**

Miracle Ceramic, Behind Varmora Ceramic,  
8-A N/H Dhuva, Morbi-363 621, (Guj.) India.

Call : +91 97252 29421, +91 99789 45699